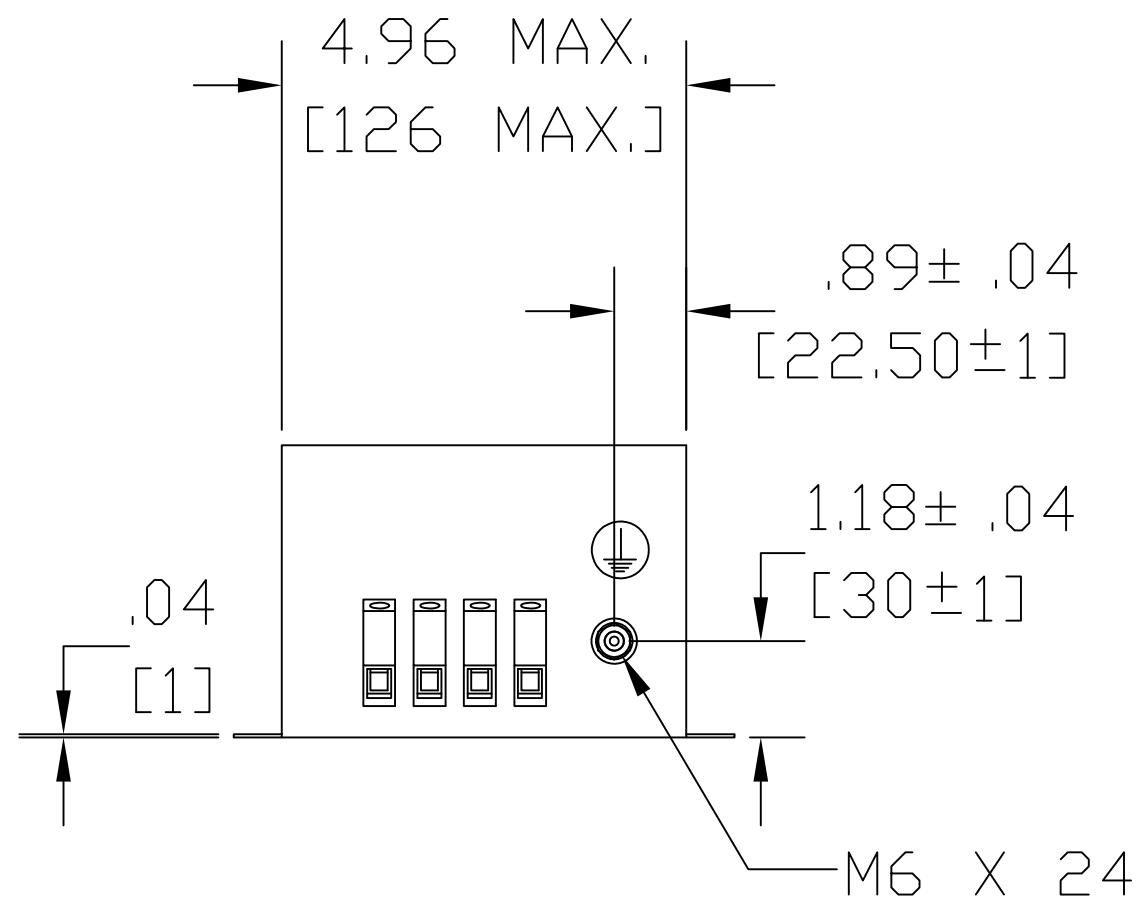


Terminals 10mm²
Tightening Torque of screw 1.5-1.8 Nm.



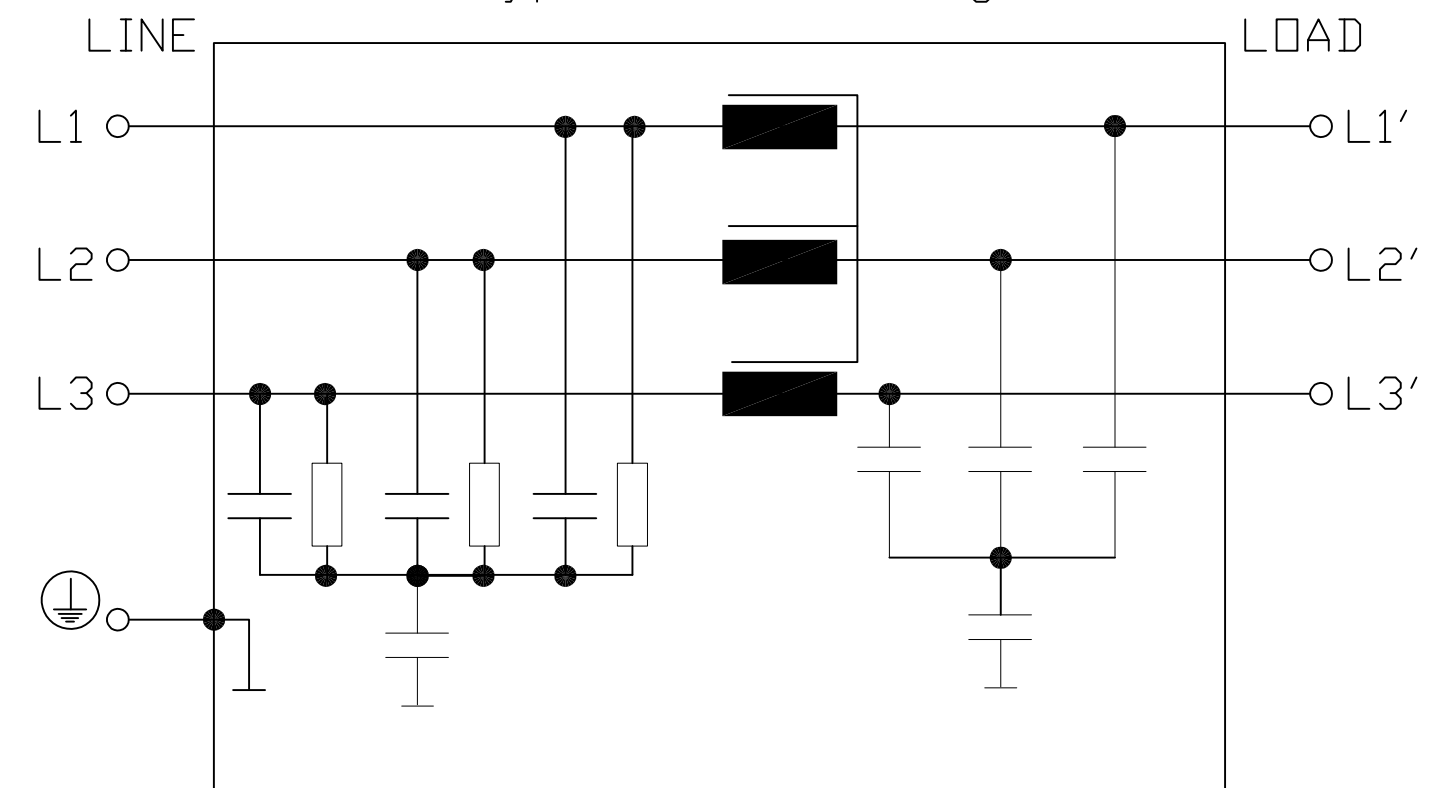
Tightening Torque 3 ± 0.15 Nm

Technical data and measuring conditions.

Rated Voltage V_R	760/440 V AC, 50/60Hz.
Rated Current I_R	Referred to 40 °C ambient temperature
Test Voltage V_{test}	3270 V DC, 2 s (line/line) 3000 V DC, 2 s (line/case)
Overload Capability (thermal)	1.5 · I_R for 3 min per hour or 2.5 · I_R for 30 s per hour
Leakage Current I_{leak}	At 690 V AC, 50 Hz.
Climatic Category (IEC 60068-1)	25/100/21 (-25 °C/+100 °C/21 days damp heat test)
Approval Standards	EN 133200, UL 1283, CSA C22.2 No. 8
Approval Markings	UR, cUR

V_R AC V	I_R A	Terminal cross section mm ²	I_{leak} mA	$R_{typ.}$ m ohm	Approx. Weight kg. / lbs.
760/440	25	10	< 7	8.0	4 / 8.8

Typical Circuit Diagram.



NO	REVISION	DATE	BY	TOLERANCES (EXCEPT AS NOTED)
				DECIMAL
				.XX ± .02
				.XXX ± .01
				FRACTIONAL
				± 1/32
				ANGULAR
				± 1/2°