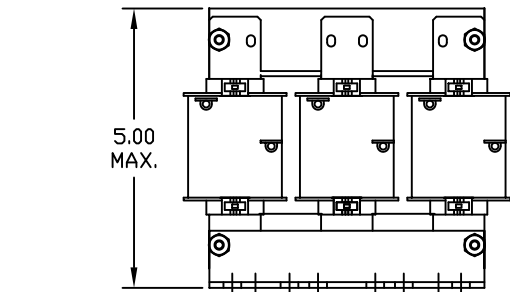
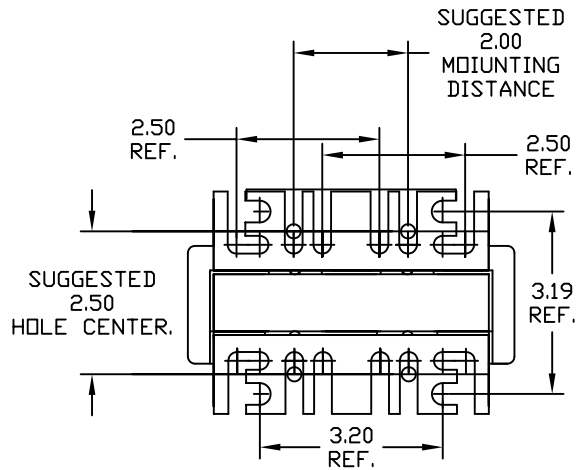
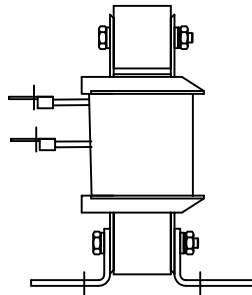


690V	NEC MOTOR HP	CATALOG NO	__AMPS(A)	APPROX WT-LBS	WATTS LOSS	RING TERMINAL HOLE SIZE.
3% Z	10	KLR16DRLV	16	8	52	#10



TC TRANS-COIL, INC MILWAUKEE WI WWW.transcoil.com 800-824-8282	Performance and Protection for Drives. KLR Series Line Reactor CATALOG # [] 3PH, 50/60Hz, 690V Max, [] Amps, RoHS		



				TOLERANCES (EXCEPT AS NOTED)
				DECIMAL
				.XX ± .03
				.XXX ± .01
				FRACTIONAL
				± 1/32
				ANGULAR
NO	REVISION	DATE	BY	± 1/2°