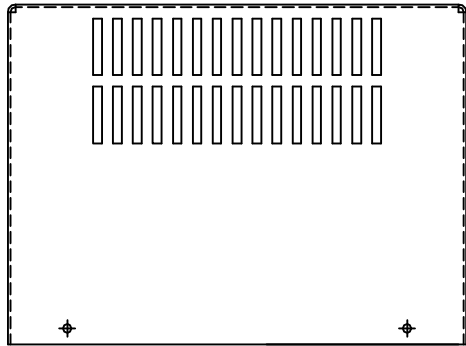
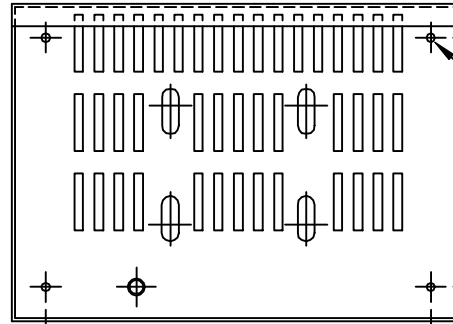
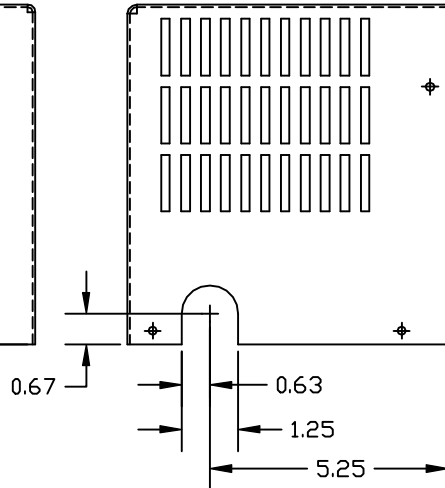


NOTES:
 MATERIAL: #16GA (.059) STEEL
 FINISH:
 PRODUCT CODE - 312E
 COLOR - PEBBLE GRAY (BEIGE)
 POWDER TYPE - POLYESTER
 -POLYURETHANE



COVER
 TCI P/N 17134

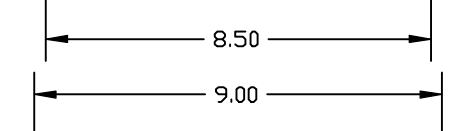


0.75

.187 DIA HOLE
 (4 PLACES)

5.50

NOTES:
 MATERIAL: #16GA (.059) STEEL
 FINISH:
 PRODUCT CODE - 312E
 COLOR - PEBBLE GRAY (BEIGE)
 POWDER TYPE - POLYESTER
 -POLYURETHANE
 TOTAL ENCLOSURE WEIGHT: 6 LBS.



KEYSLOT FOR #10 SCREW
 (2 PLACES)

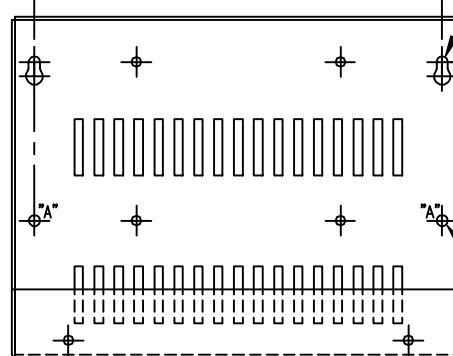
COVER IN PLACE

1.00

3.50

7.51

LOCATION FOR CUSTOMERS
 CONDUIT FITTINGS
 (BOTH SIDES)

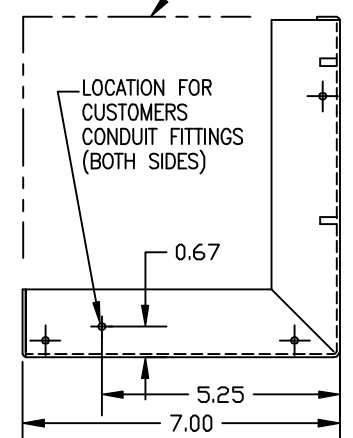


10.00

BASE

TCI P/N 17133

.203 DIA HOLE
 (2 PLACES) MARKED "A"



0.67

5.25

7.00

				TOLERANCES EXCEPT AS NOTED
				DECIMAL
				.XX ± .01
				.XXX ± .005
				FRACTIONAL
				± 1/32
				ANGULAR
				± 1/2°
△	REDRAWN-NO REVS	4/4/01	RJC	
NO	REVISION	DATE	BY	